

Cooling System

3

Table of Contents

Exploded View..... 3-2

Cooling Fan..... 3-4

 Cooling Fan Removal..... 3-4

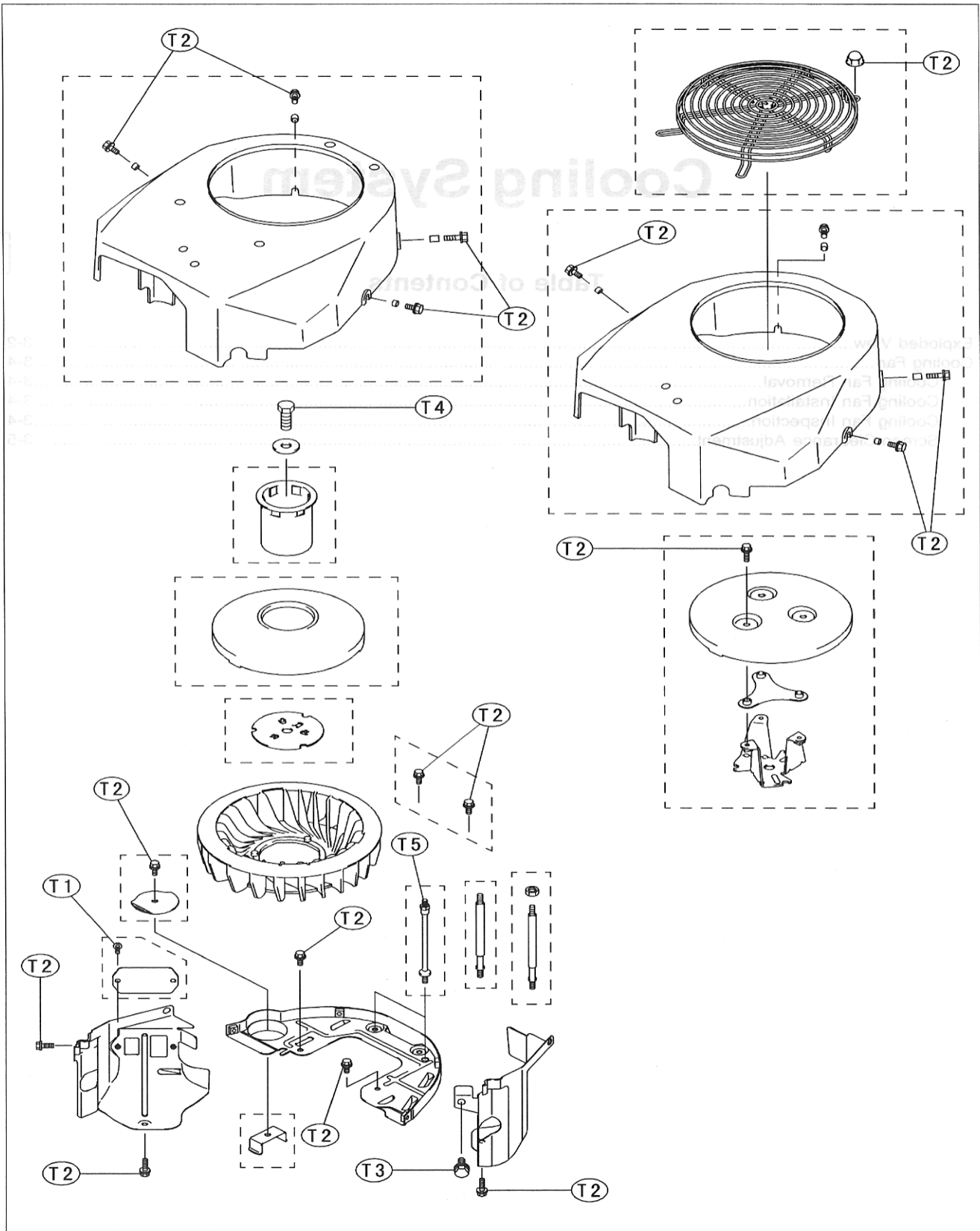
 Cooling Fan Installation..... 3-4

 Cooling Fan Inspection..... 3-4

 Screen Clearance Adjustment..... 3-5

3-2 COOLING SYSTEM

Exploded View



TO ORDER: 800-633-0519 Fax: 888-773-0002
<Sflowers@eaglefloorsolutions.com>

Exploded View

[FH451V, FH500V, FH531V]

- T1: 3.9 N·m (0.40 kg·m, 35 in·lb)
- T2: 5.9 N·m (0.60 kg·m, 52 in·lb)
- T3: 17 N·m (1.7 kg·m, 12.0 ft·lb)
- T4: 56 N·m (5.7 kg·m, 41 ft·lb)
- T5: 7.8 N·m (0.8 kg·m, 69 in·lb)

[FH601V, FH641V, FH680V, FH721V]

- T1: 3.9 N·m (0.40 kg·m, 35 in·lb)
- T2: 5.9 N·m (0.60 kg·m, 52 in·lb)
- T3: 17 N·m (1.7 kg·m, 12.0 ft·lb)
- T4: 56 N·m (5.7 kg·m, 41 ft·lb)
- T5: 7.8 N·m (0.8 kg·m, 69 in·lb)



Cooling Fan Removal
Refer to Physical Removal in Electrical System chapter.
Cooling Fan Installation
Refer to Physical Installation in Electrical System chapter.
Cooling Fan Inspection
Visually inspect the blades [A] in the cooling fan [B].
If they are cracked, warped or damaged, replace the cooling fan.
If any mud or dust have stuck to the cooling fan, clean it.
Cooling fan is cleaned by washing in detergent and water.

3-4 COOLING SYSTEM

Cooling Fan

Exploded View

Cooling Fan Removal

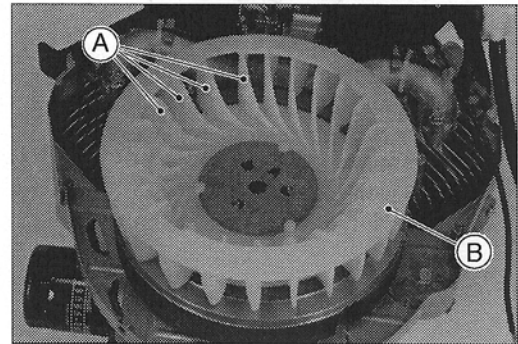
- Refer to Flywheel Removal in Electrical System chapter.

Cooling Fan Installation

- Refer to Flywheel Installation in Electrical System chapter.

Cooling Fan Inspection

- Visually inspect the blades [A] in the cooling fan [B].
- ★ If they are any cracks, warps or damaged, replace the cooling fan.
- ★ If any mud or dust have stuck to the cooling fan, clean it.
- Cooling fan is cleaned by washing in detergent and water.



CAUTION

Do not clean the cooling fan in oil solvent. It may be damage by oil solvent.

Cooling Fan

Screen Clearance Adjustment

- Check clearance between screen [A] and fan housing [B]. If clearance is less than 1 mm, add proper number of spacer [C] between screen and bracket comp [D] to adjust clearance [G] 1 ~ 3 mm.

F: Screws

G: Clearance 1 ~ 3 mm

